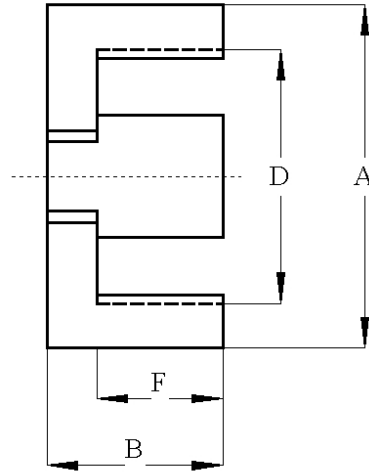
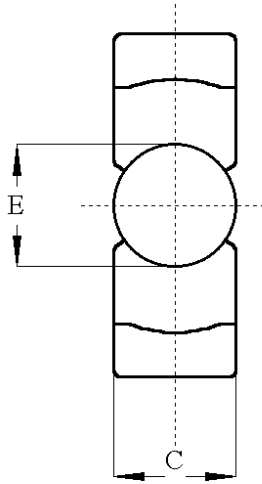


## ETD CORES



### Core Dimensions

Type	A	B	C	D	E	F	Material	AL Value (±25%)
ETD 29	30.6 + 0 -1.6	16 + 0 -0.4	9.8 + 0 -0.6	22 + 0 -1.4	9.8 + 0 -0.6	10.7 + 0 -0.6	CF138	2200
ETD 34	35.4 + 1 -0.6	17.5 + 0 -0.4	11.1 + 0 -0.6	25.6 + 1.4 -0	11.1 + 0 -0.6	11.8 + 0.6 -0	CF138	2600
ETD 39	38.9 + 1.1 -0.7	20 + 0 -0.4	12.8 + 0 -0.6	29.3 + 1.6 -0	9.8 + 0 -0.6	10.7 + 0 -0.6	CF129	2700
ETD 44	43.8 + 1.2 -0.8	22.5 + 0 -0.4	15.2 + 0 -0.8	32.5 + 1.6 -0	15.2 + 1.6 -0	16.1 + 0.8 -0	SB7C	3500
ETD 49	48.5 + 1.3 -0.9	24.9 + 0 -0.4	16.7 + 0 -0.8	36.1 + 1.8 -0	16.7 + 0 -0.8	17.7 + 0.8 -0	CF129	3800

# ETD Cores

Data sheet Ref: APS-10 (14/01/04)

# PACE

POWER MAGNETICS  
DIVISION



### Power Magnetics

10 Balmer Cut,  
Buckingham Industrial Park,  
Buckingham MK18 1UL

**T** 01280 817243

**F** 01280 823167

**E** sales@powermagnetics.co.uk  
[www.powermagnetics.co.uk](http://www.powermagnetics.co.uk)

A DIVISION OF  
**PACE**  
COMPONENTS  
LIMITED