

NSS Series

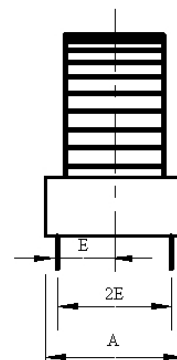
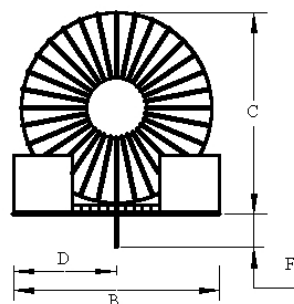
PACE Part Number	Typical Inductance (μH)	DC Current (A)	Case Style	Pin Diameter (mm)
NSS-47-3	47	3	a	0.65
NSS-68-3	68	3	c	1.00
NSS-100-3	100	3	c	0.80
NSS-150-2	150	2	c	0.65
NSS-220-14	220	1.4	b	0.50
NSS-330-09	330	0.9	b	0.65
NSS-470-06	470	0.6	c	0.65
NSS-150-3	150	3	c	0.65
NSS-220-3	220	3	d	0.80
NSS-330-3	330	3	d	0.65
NSS-470-2	470	2	d	0.65
NSS-680-13	680	1.3	d	0.65
NSS-1K-09	1000	0.9	d	0.65

Case Style	Dimensions (mm)					
	A	B	C	D	E	F
a	11.4	16.5	16.5	8.25	3.8	2.8
b	11.4	21.0	21.6	10.5	3.8	2.8
c	15.3	24.1	24.1	12.1	5.7	2.8
d	17.8	31.7	31.8	15.9	6.4	2.8

OTHER VARIATIONS AVAILABLE ON REQUEST



Schematic



Chokes Power Inductors NSS Series

Data sheet Ref: APS-102 (11/12/03)

PACE

COMPONENTS



Pace Components Ltd

Unit 38 Ballmoor
Buckingham Industrial Park
Buckingham MK18 1RQ

T 01280 822733

F 01280 823839

E sales@pacecomponents.co.uk
www.pacecomponents.co.uk

INCORPORATING
PACE
POWER MAGNETICS
DIVISION